

Turbine Controls Limited

52 Kenilworth Drive, Oadby, Leicester LE2 5LG, England

☎ +44 (0)116 271 7248 📠 +44 (0)116 271 7250

✉ sales@tcluk.net www.tcluk.net



Product Data Sheet

Date August 2016

Product Reference

Part No: SMARTStart

Scope

Gas Turbine Starter Motor Soft Start

Starter Motor Current Linearization

Gas Turbine Starter Assistance during "Combustion Established" to "Self-Sustaining" Speed

Technical Data

Rated Main Supply Voltage:	77 – 150 V DC
Rated Control Circuit Voltage:	24 V DC / 110 V DC
Rated Operation Current:	400 A
Maximum Operation Current:	600 A
Main Supply Voltage Decoupling:	Capacitors Filter
SMARTStart Channels:	2
Controlled Motor Type:	Brushed DC Motor Series Field
Capacitors Charging\Discharging Circuit:	YES
Type Of Cooling:	Natural Convection
DC BUS Pre-Charge Time	5 second
Ramping Time To Nominal Current:	5-10 second
Starting Time To Self-Sustaining Speed:	35 second
Controller Type:	Programmable Logic Controller
Digital Input Channels:	16 DI 24VDC Sink Type
Output Relays:	6 x 2CO 2000 VA
Analogue Channels:	2 x 4...20mA
Optional Additional I/O:	YES
Supply Voltage Monitoring:	0-150V DC / 4...20mA
Motor Current Monitoring:	0-600 A / 4...20mA
Ignitors Control:	Optional Standard: Ethernet IP
Communication Protocols	Optional: Control Net Modbus TCP/IP Modbus RTU



Turbine Controls Limited

52 Kenilworth Drive, Oadby, Leicester LE2 5LG, England

+44 (0)116 271 7248 +44 (0)116 271 7250

sales@tcluk.net www.tcluk.net



Product Data Sheet

Date August 2016

Product Reference

Part No: SMARTStart

Safety

Overcurrent Protection

Analogue Bad Quality

Remote Monitoring

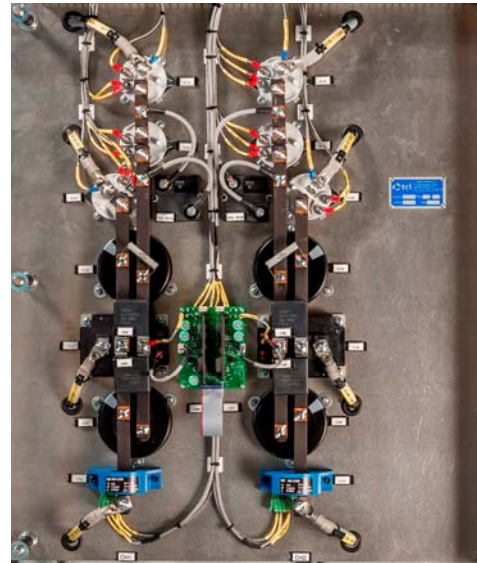
Fault Diagnostic

Environmental

Relative Humidity: <=90% without condensation or dripping water

Ambient Air Temperature: 0 – 55 °C

Enclosure: IP 55 Approved



Dimensions

Mounting Plate (H x W): 1900 x 700 mm

Enclosure (H x W x D): 2000 x 800 x 800 mm

Enclosure IP: IP 55 Approved

